

Strader Grant Part II

Motion presented by Arts & Culture Committee:

Diggs Plaza sits at the northwest corner of Burnet Woods at the intersection of Clifton Avenue and Ludlow Avenue. This intersection is a busy one and hard to cross for pedestrians. This is particularly true of Clifton Ave at the Plaza since the street is six lanes wide plus a bike lane. The difficulty of getting to the Plaza separates it from the heart of the business district, which reduces its use and enjoyment.

There is an opportunity to enhance the Plaza while reducing the number of car travel lanes pedestrians would need to cross to get to the Plaza. There may also be an opportunity in the future to physically enlarge the Plaza. These enhancements would more fully bring the Plaza and this corner of the park into the life of the community. The entire intersection is a challenge for pedestrians because of the heavy traffic flow, the high pedestrian traffic, and the relatively narrow sidewalks. The City has decided to extend the bike lane along Clifton Avenue, north of Ludlow, to Bryant Avenue before the end of the year, with potential future extensions. This extension to Bryant will effectively narrow the traveling vehicular traffic along Clifton Avenue and make the area more bike and pedestrian friendly.

A grant application (**NBDIP**) has been submitted to the City of Cincinnati to develop a design plan for the business district aimed at making a safer and more pedestrian-friendly environment. The study includes all the intersections along Ludlow with a focus on the Clifton/Ludlow intersection, and with the intent to introduce art into the infrastructure of the business district.

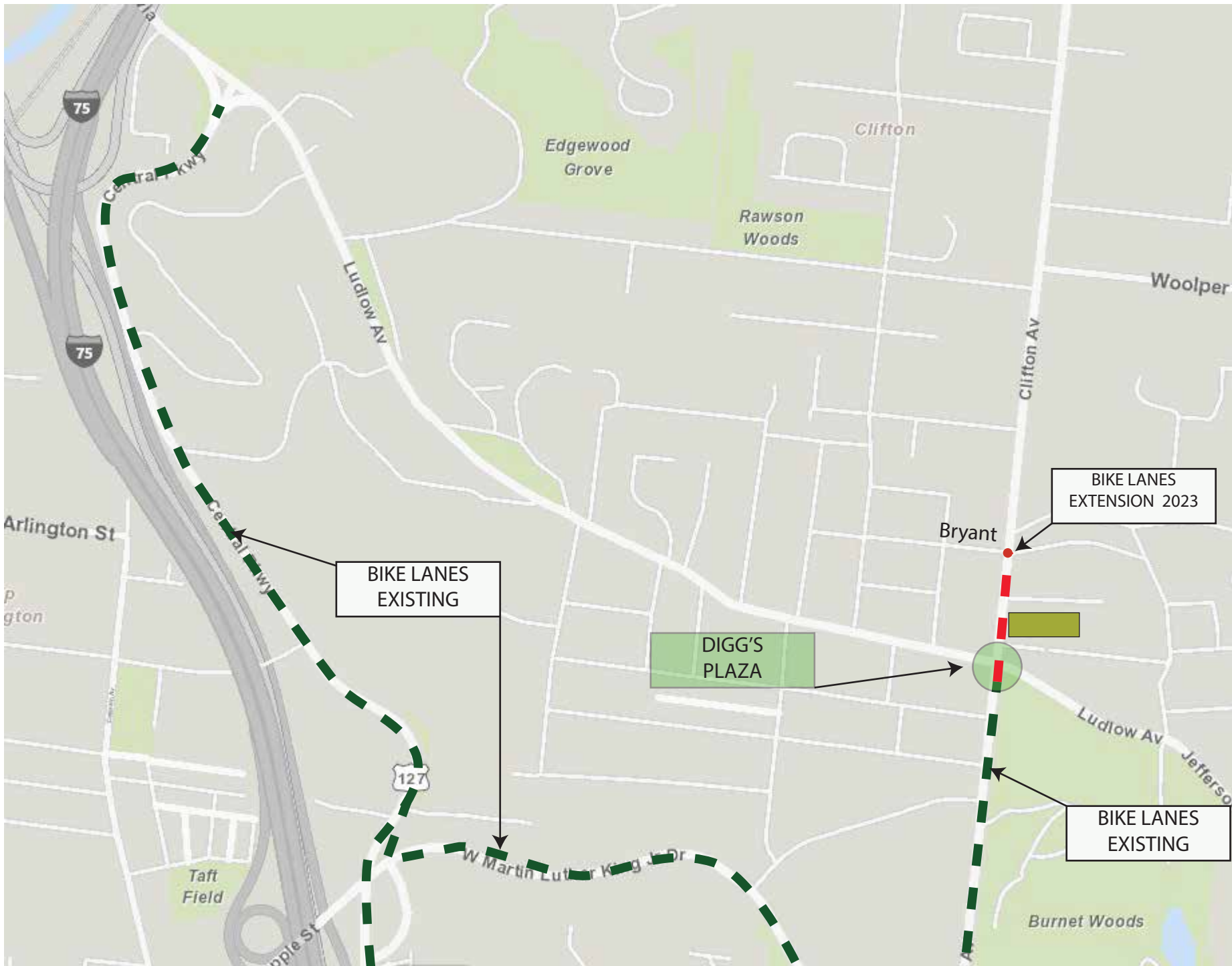
Funding from the Strader Foundation would be used to enhance the safety of the plaza by adding lighting and a security camera, create a bike hub with bike racks and a bike maintenance station, and develop design plans and construction documents for a transformation of the Clifton/Ludlow intersection and eventual expansion of Diggs Plaza.

Design plans would thematically link Diggs Plaza, the public space at the Fire House, the other corners at the intersection and the new CCAC.

MOTION: CTM has already voted to authorize its Arts & Culture Committee to apply for a Strader Grant. This motion is to ensure that the design intent of creating and implementing a design to reconnect Digg's Plaza to the Business District with broader sidewalks and/or an extended bike lane, an easier pedestrian crossing, new bike facilities, and safety enhancements, through the use of public art is acknowledged and acceptable.

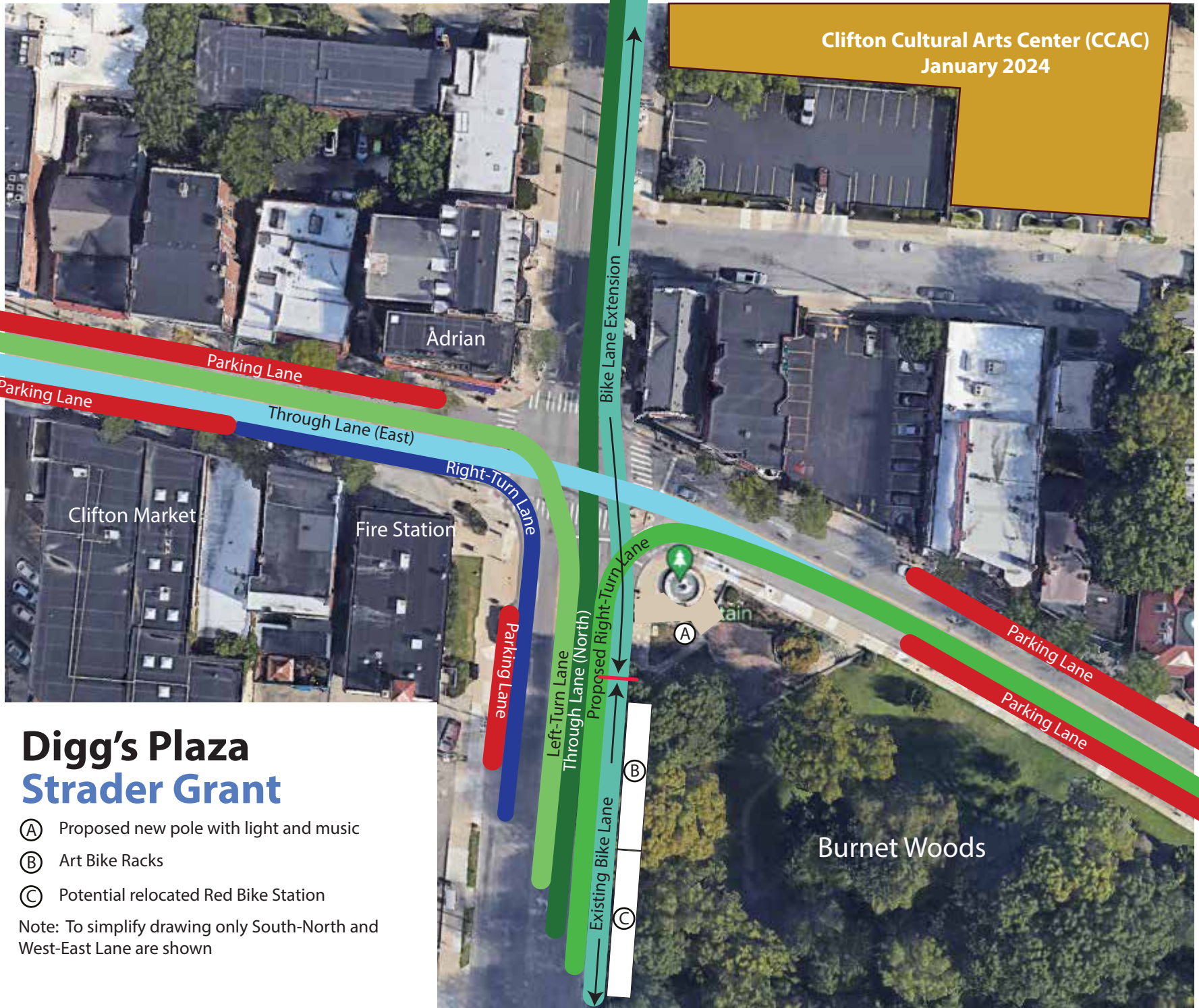
The proposed broad scope includes:

- Art bike racks (2 or 3),
- Bike maintenance pole,
- Potential relocation of the Red Bike station from Howell,
- Additional lighting for safety,
- Broadcast of classical music to limit misconduct.



CONTEXT

Clifton Cultural Arts Center (CCAC)
January 2024



Digg's Plaza Strader Grant

- (A) Proposed new pole with light and music
- (B) Art Bike Racks
- (C) Potential relocated Red Bike Station

Note: To simplify drawing only South-North and West-East Lane are shown